

**HARBOUR
CITY GP**

***TECHNICAL
REGULATIONS***



Contents

WELCOME TO THE PROVELO SUPER LEAGUE	3
ProVelo Season	3
Event 1 SA Kick It 18 – 20 January 2025	3
Event 2 Melbourne to Warrnambool 8 – 9 February 2025	3
Event 3 Tour of Tasmania 21 – 23 February 2025	3
Event 4 Harbour City GP 7-9 March 2025	3
Event 5 Grafton to Inverell 15 March 2025	3
Event 6 Q Tour 21 – 23 March 2025	3
SA KICK IT Tour Information	4
Event Schedule	4
Contact List	5
Event Medical	6
Echelon Club	6
Meetings	7
Race Number Collection	7
Rider Sign On	8
Presentations	8
Stage 1 Time Trial	9
Stage 2 Criterium	11
Stage 3 Road Race	11
Rules & Regulations	13


CRONULLA R.S.L.
 Friends by the beach

**The perfect place to
 relax, dine &
 connect with friends
 by the beach.**

cronullarsl.com.au



**TURNING DATA
 INTO PERFORMANCE INSIGHTS**

www.billigence.com



WELCOME TO THE PROVELO SUPER LEAGUE

The ProVelo Super League (PSL) was created for Australian road cycling.

The PSL committed to making the necessary financial investments upfront to build an elite focused platform that has the potential to drive viewing audiences, increase spectators and support pathway growth.

The end goal - to create more value for events, teams, athletes and the government funding and corporate partners that enable us to deliver the league season.

Every aspect of the PSL strategy exists for good reason. Generally speaking, although cycling has its idiosyncrasies, the strategic principles we are applying, have consistently grown the commercial value and returns in elite sport.

This extends to our brand. There was a strategic logic to creating a 'league' and not a series. We wanted to establish a strong, united, committed community that had a mutual bond and passionate interest in seeing our sport shift from "survive to thrive" through the league season but beyond also.

As a key member of our league community, with us, you and your connected community of members, volunteers, partners, riders, family and friends will play an integral role in the PSL achieving its vision.

Together we must act as one, proactively and positively promote road cycling and individually support each other to grow. If we adopt a league first mentality, support our broadcast partner, activate universally our various communication channels to grow our fan base; we will succeed.

We know we won't get everything right, we will make mistakes; but we are committed to evolving and working with each of you to make the PSL sustainable and vibrant for the current and future generations of road cycling.

This is our moment – let's make it happen.

Yours in cycling.

Gerry, Matt and Aaron.

ProVelo Season

Event 1	SA Kick It	18 – 20 January 2025
Event 2	Melbourne to Warrnambool	8 – 9 February 2025
Event 3	Tour of Tasmania	21 – 23 February 2025
Event 4	Harbour City GP	7-9 March 2025
Event 5	Grafton to Inverell	15 March 2025
Event 6	Q Tour	21 – 23 March 2025



Harbour City GP Information

Event Schedule

DATE & STAGE	TYPE	CATEGORY	DISTANCE	RACE START TIME	EXPECTED FINISH TIME	LOCATION
Friday 7 March Stage 1	Kermese	Women	14 Laps 39.2km	6:15pm	7:15pm	Sydney Motor Sports Park Ferrers Rd, Eastern Creek
		Men	17 Laps 47.6km	7:30pm	8:30pm	
Saturday 8 March Stage 2	Criterium	Women	34 Laps 40.8km	5:00pm	6:00pm	Cronulla Wanda Beach
		Men	38 Laps 45.6km	6:15pm	7:15pm	
Sunday 9 March Stage 3	Circuit Race	Women	49 Laps 78.4km	9:30am	11:45am	Pheasant Wood Circuit Marulan
		Men	62 Laps 99.2km	1:30pm	3:45pm	

Contact List

Race Officials

Race Director	Karin Jones	Phone: 0408 375 238
Commissaire PCP	Peter Tomlinson	
Commissaire	David Moiler	
Commissaire	Neil Hamey	
Judge	Charlotte l'Ons	
Judge	Rick Jordon	

Event Team

PSL Director	Matt Wilson
Event Services	Karin Jones
VIP Hospitality	Aaron Flanagan
Media Manager	Lucy Bowden
Social Media	Darren Casey
Media Director	Dan Jones
Athletes Services	Annie Pryjmak
Driver Coordinator	Ray Thompson
Event Crew	Ross Henry
Event Crew	Connor Bagot

Timing and Results

Timit Sports Timing	Ugo Durand
---------------------	------------

Broadcast

Editrix	Ian Gates
---------	-----------

Commentary

Venue	Angus Calder
Broadcast	Matilda Raynolds and Matthew Keenan

Photography

Photographer	Con Chronis
--------------	-------------

Neutral Service

SRAM	Rob Eva
------	---------

Event Medical

Medical Motos	Mark Hollis
---------------	-------------

Hospitals – 000 FOR ALL EMERGENCIES

Westmead Hospital

Cnr Hawkesbury Road & Darcy Rd
Westmead
(02) 8890 5555

St George Hospital

Gray St
Kogarah
(02) 9113 1111

Goulburn Base Hospital

130 Goldsmith St
Goulburn
(02) 4825 4000

SBS Broadcast Live Broadcast

SBS 1 and SBS On Demand will broadcast live from Pheasant Wood Circuit

Sunday 9 March 1pm to 4pm AESDST

Comprehensive replays can also be found post event on SBS On Demand

Social Media

Facebook / Instagram / Tiktok - @ProVeloSuperLeague

X (Twitter) - @ProVeloSL

YouTube - <https://www.youtube.com/@provelosuperleague>

Hashtags **#PSL2025** #ProVeloSuperLeague

Echelon Club

The Echelon Club is a great opportunity for your Team to invite major stakeholders. This VIP experience will include networking opportunities with our PSL ambassadors, sponsors and special guests.

In the Echelon Club guests will enjoy access to a private cash bar for purchase with two hours of gourmet canapés and/or grazing platter service. The enclosure comes furnished, with shaded areas for the summer weather.

Teams and Riders can purchase tickets to the Echelon Club for VIP/Sponsors for \$75 plus ticketing platform booking fees.

Simply insert this code at checkout: ECHELONCLUB_VIP

More information on the Echelon Club can be found here

<https://provelosuperleague.com/membership/echelon-club>

Meetings

Race Number Collection

Date Friday 7 March

Time 2:30pm to 5:00pm

Location Sydney Motor Sports Park, Ferrers Rd, Eastern Creek

**Riders licenses will need to be presented when collecting race numbers

Team Managers and Individual Riders Meeting

Date Friday 7 March

Time 4:00pm

Online <https://meet.google.com/woj-xbht-hsy>

Commissaires and Officials Meeting

Date Friday 7 March

Time 5pm

Location Sydney Motor Sports Park, Ferrers Rd, Eastern Creek

Race Information WhatsApp Group

<https://chat.whatsapp.com/FK32awhLtBIG1ntWrER5vl>

Extreme Weather Policy

ProVelo will refer to AusCycling Extreme weather policy should we experience extreme weather conditions. <https://admin.platform.auscycling.org.au/uploads/extreme-weather-policy-v1-website.pdf>

Rider Sign On

Riders will be required to sign on for each stage at the start finish line of all three stages.

Sign On will be open 45mins prior to race start and closed 10 mins prior to race start. Penalties will apply for riders not signing on in the required time period.

Presentations

Presentations will take place on the main stage after each stage.

All Jersey leaders and stage placings, 1, 2, 3 will be required to present to the presentation stage directly after each women's and men's stage finish.

After the final stage finish, stage placings, 1, 2, 3, all jersey winners, 1st, 2nd and 3rd on GC and all League Jersey Leaders must present for presentations immediately after the stage finish.

Criterion Regulations

All stages will be run under criterium regulations as per article 10

Convoy vehicles

No team convoy vehicles will be allowed at any stage of the event.
Chief Comm and SRAM neutral spares will follow on stage 1

Stage 1 Sydney Motorsport Park Kermesse

Date Friday 7 March

Time **Women** - 6:15 pm to 7:15pm

Men - 7:30pm to 8:30pm

Distance **Women** - 14 X 2.8 = 39.2km

Men – 17 X 2.8 = 47.6km

Sprints **Women** – laps 5 & 10

Men – Laps 6 & 12

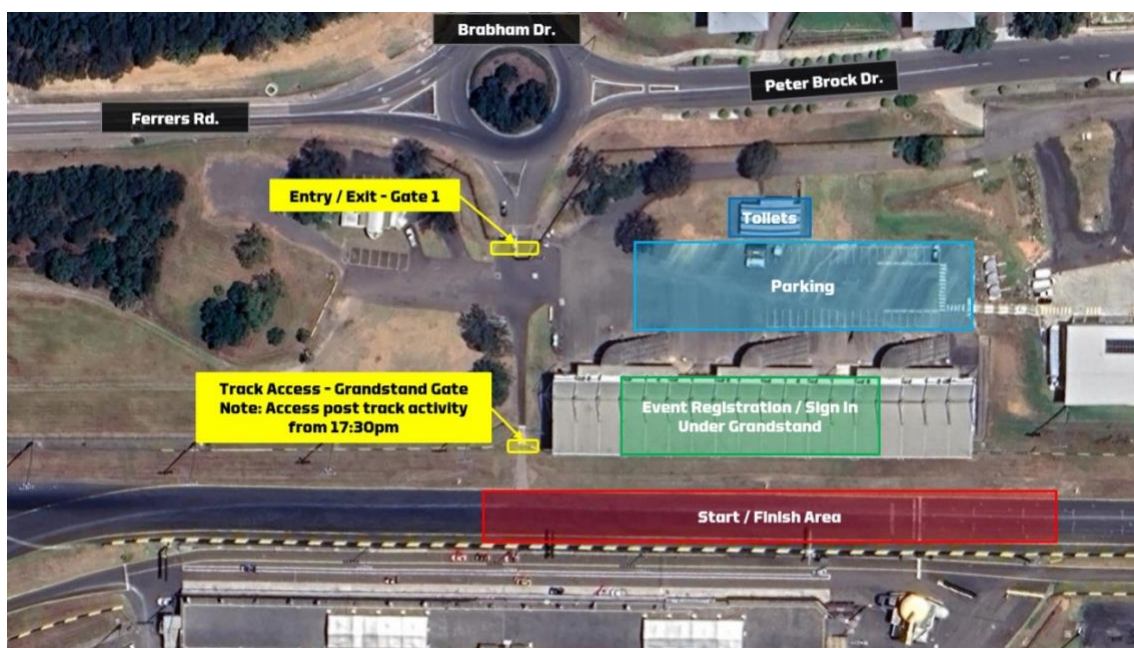
Start Location Sydney Motor Sports Park, Ferrers Rd, Eastern Creek

Venue Information

Sydney Motorsport Park is located approximately 40km from the Sydney CBD. Please allow an hour by car.

Spectator and team Car parking is available via Gate 1, the main entrance off Ferrers Rd Eastern Creek.

Parking, and the event hub is accessible via Gate 1, and track access for competitors and spectators would be through the track gate to the west of the grandstand.



Course Maps

Sydney Motorsports Park - <https://ridewithgps.com/routes/49551251>

Event venue site Map link - <https://www.sydney motorsport park.com.au/pages/map#/>

Stage 2 Cronulla Criterium

Date Saturday 8 March

Time **Women** - 5:00pm to 6:00pm
Men - 6:15pm to 7:15pm

Distance **Women** – 34 X 1.2 = 40.8km
Men – 38 X 1.2 = 45.6km

Sprints **Women** – laps 9 & 18
Men – Laps 15 & 30

Start Location Cronulla, Wanda Beach

Parking Access to Team cars car park is Via Sanderson street onto Mitchell rd. Team car parking is reserved in Wanda reserve highlighted below.

Course Details



- Event HUB 
- Team Car Park 
- Access via Sanderson Street 
- Start / finish 

Event Hub, Medical , toilets , timing and Race officials area is adjacent to Wanda Reserve and is only access Via foot from team car park area.

Course map - <https://ridewithgps.com/routes/48721250>

Stage 3 Pheasant Wood Circuit Race

Date Sunday 9 March

Time **Women** - 9:30am to 11:45am

Men - 1:30pm to 3:45pm

Distance **Women** – 49 X 1.6 = 78.4km

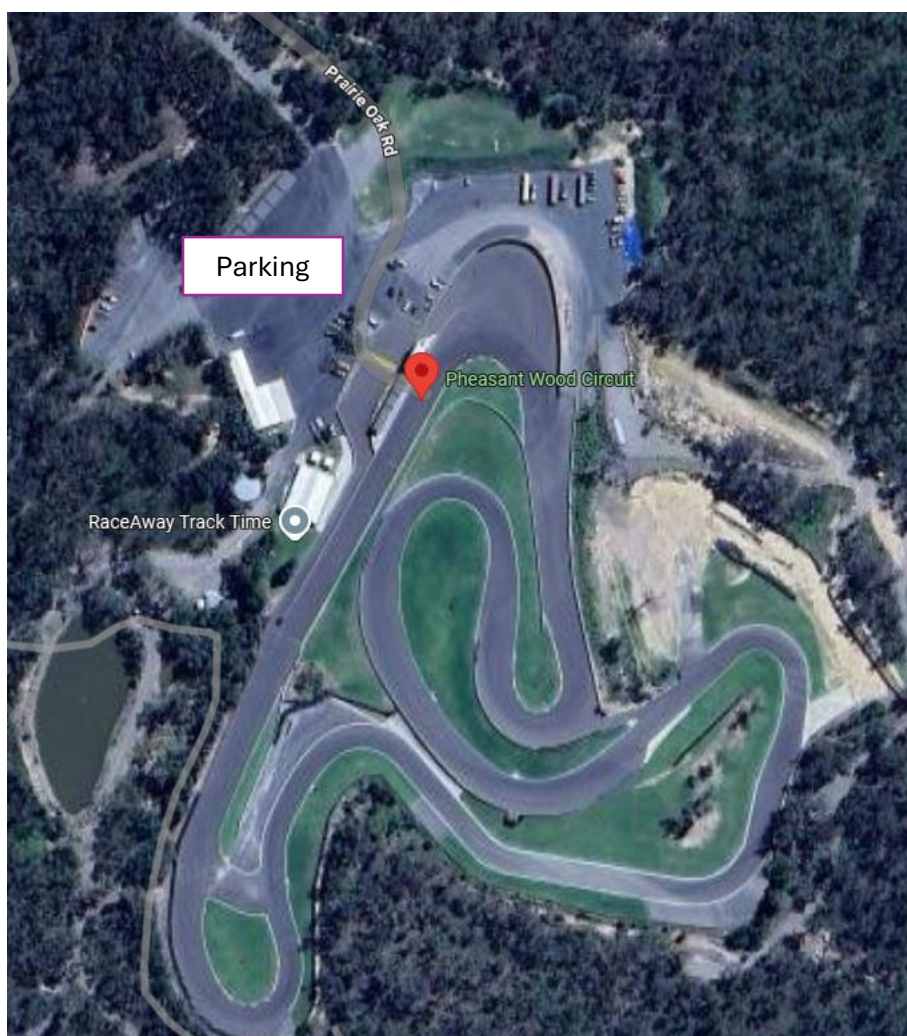
Men – 62 X 1.6 = 99.2km

Sprints **Women** – laps 10,20,30,40

Men – laps 13,26,39, 52

Start Location Pheasant Wood Circuit
8 Prairie Oak Rd,
Marulan

Parking Teams and individual riders will be adjacent to the track entrance.



Rules and regulations

ARTICLE 1. ORGANISATION

Harbour City GP is a stage race which is part of the ProVelo Super League Series.

The event is sanctioned by AusCycling and applies the AusCycling rules, as well as the ProVelo Super League Regulations, available online at <https://provelosuperleague.com/registration/rules-and-regulations>

ARTICLE 2. PARTICIPATION

The respective events are open to ProVelo Super League teams, Wildcard teams and Wildcard individual riders.

Each team will comprise of six (6) riders with a minimum of four (4) riders. Teams can register a seventh rider, provided that this rider is under 19.

ARTICLE 3. NEUTRAL TECHNICAL SUPPORT

The technical support service is handled by SRAM

The neutral support during stage 1 is taken care of by means of 1 vehicle

Servicing will take place on the left side of the road.

ARTICLE 5. BONUSES

Time Bonuses will be awarded at all stages

Intermediate Sprints: 3", 2", 1"

Finishes: 10", 6", 4"

ARTICLE 6. FINISHING TIME LIMITS

All stages will be run under criterium regulations (article 10) and as such, standard time limit calculations are not applicable

ARTICLE 7. CLASSIFICATIONS

The following classifications will be issued. All leaders are required to wear the appropriate jersey.

Individual General Classification

The competitor with the lowest cumulative time over all stages is the race leader. Each rider's cumulative time includes any time penalties assessed by the Commissaire's Panel as well as time bonuses awarded in individual stages.

When two riders or more have the same cumulative time, ties are broken according to article 2.6.015 of the UCI regulations.

Team General Classification

The team classification for the day shall be calculated on the basis of the sum of the three best individual times from each team.

The team general classification shall be calculated on the basis of the sum of the three best individual times from each team in each stage ridden.

When two teams or more have the same time in the team classification of a stage or in the team general classifications, the ties are broken in accordance with article 2.6.016 of the UCI Regulations UCI regulations.

Young Rider Classifications

Two young rider classifications are issued:

- The Under 19 classification concerns riders born in 2007 and 2008
- The Under 23 classification concerns riders born in 2003, 2004, 2005 and 2006

The young rider classifications are based on the individual General Classification ranking.

Points Classification

The points classification is awarded to the rider with the highest aggregate number of points, accumulated from intermediate sprints and stage finishes.

Points are awarded as follows for each of the intermediate sprints and stage finishes:

Place	Stage Finish	Intermediate Sprint
1	30	6
2	25	4
3	22	2
4	19	
5	17	
6	15	
7	13	
8	11	
9	9	
10	7	

11	5	
12	4	
13	3	
14	2	
15	1	

When two riders or more have the same number of points in the points classification, ties are broken in accordance with article 2.6.017 of the UCI regulations.

ARTICLE 8. STARTS

Riders will be required to sign on for each stage at the start finish line of all three stages.

Sign On will be open 45mins prior to race start and closed 10 mins prior to race start. Penalties will apply for riders not signing on in the required time period.

ARTICLE 9. RACE INCIDENTS OCCURRING IN THE LAST LAP

In the case of a duly noted incident in the last lap of stage 1 or the last 2 laps of stages 2 and 3, the rider or riders affected shall be credited with the time of the rider or riders in whose company they were riding at the moment of the incident. Their placing shall be determined by the order in which they actually cross the finishing line.

An incident is considered as any event independent from the physical capacity of the rider (fall, mechanical problem, puncture).

Riders affected by an incident are asked to make themselves known to a Commissaire by raising their hand and report to a Commissaire after the finish of the stage.

If the result of a duly noted fall in the last 3km, a rider cannot cross the finishing line, they shall be placed last in the stage and credited with the time of the rider or riders in whose company they were riding at the time of the incident.

Decisions related to this article are taken independently by the Commissaire's Panel.

ARTICLE 10. CRITERIUM STAGES

All competitors must complete the criterium stages

The criterium stages will be included in the team's classification.

In the event of a recognised mishap, the affected riders will be allowed one lap to re-join the field, up to five kilometres to go. After five kilometres to go, no free laps will be given.

A rider who is granted a free lap must return to the race in the position held at the time the mishap occurred. A rider who was in a group shall return to the same position the next time around.

In the event of a fall, a rider will be allowed such time as determined by the PCP to re-join the field.

If a fall occurs with five kilometres or less of the race to go, the rider will be withdrawn and credited with the time of the largest group, unless they decide to chase at their own risk.

Lapped riders will be debited with time equivalent of average lap time for each lap lost.

In the event of two or more riders lapping the field will sprint for the minor placings at three laps to go and the lapped riders must vacate the circuit to allow the leading riders to contest the finish unimpeded.

If a lone rider laps the field, they will automatically win the race at the bell (one lap to go). Lapped riders can not affect the result of the race.

Lapped rider must be withdrawn officially by race officials for the above standard to be implemented and an officially withdrawn rider is considered to have completed the stage and is permitted to continue in next stage.

Rider withdrawing from race under their own will be considered as retiring and will be classified as a stage DNF and is not permitted to continue in the next stage.

Pulled Riders

In the case that a rider is pulled from the event they will be given the final time of the final finisher plus calculated additional time. Number of Laps Not Completed	% of winners average lap time
1	100%
2	110%
3	120%
4	130%
5	140%
6	150%
7	160%
8	170%
9	180%
10	190%
11+	200%
Genuine effort 50% or less of race	250%

ARTICLE 11. RESULTS

Results will be released after confirmation from the Commissaire's Panel. Official Results will be posted on the race's official website.

ARTICLE 12. LOCAL LAWS

It is against the law to urinate in public in NSW and by doing so you may be cited by local law enforcement. Please obey all traffic laws, speed limits and the directions of law enforcement. The

Commissaires may enforce these rules concerning rider and team manager conduct, even if there is no citation by local law enforcement.

ARTICLE 13. RIDER IDENTIFICATION

During each stage, all competitors must use the frame number plate and body numbers as supplied by the organisation and not altered in any way.