



# ***TECHNICAL REGULATIONS***

*ROUND ONE - SA KICK IT*

*JANUARY 24-26, 2026*

*V2.3 - ISSUED 09-01-2026*



# CONTENTS

<b>WELCOME TO SEASON 2 OF PSL</b>	4
ProVelo Season	4
 <b>SA KICK IT Tour Information</b>	 5
Event Schedule	5
Contact List	7
Event Medical	7
Echelon Club	8
Meetings	9
Race Number Collection	9
Rider Sign On	9
Presentations	10
Stage 1 Time Trial	10
Stage 2 Criterium	14
Stage 3 Road Race	16
 <b>Rules &amp; Regulations</b>	 18







24 Jan - 22 Mar



8 - 31 May



4 - 26 July



1 - 9 Aug



22 Aug - 13 Sept

# HOME OF CYCLING

**STREAM FREE**

# WELCOME TO SEASON 2 OF PSL

**The ProVelo Super League (PSL) was created for Australian road cycling.**

The launch season of the PSL successfully solidified its positioning as the “Road to the World Tour” with more than a dozen PSL riders successfully securing WorldTour Team connected opportunities including the entire podium of the SBS Women’s League and the SumUp Men’s league Champion and runner up.

With 321 athletes participating in the inaugural season from 14 Nations, the league is quickly establishing its status as a path to the best teams in Europe and following on from Season 1, competing riders can be sure the ‘world is watching’ to identify the next crop of cycling talent to progress to the World Tour.

With solid foundations, the league must “step it up” to grow our audiences and fan base. Together we must continue to act as one, proactively and positively promote road cycling and individually support each other to grow. It is imperative that we adopt a league first mentality, support our broadcast partners, sponsors and grow our fan base.

We’re looking forward to our teams and athletes putting on a great sport entertainment product and we wish everyone a successful 2026 season.

Yours in cycling.

**Gerry, Matt and Aaron.**





# SA KICK IT

## Tour Information

DATE & STAGE	TYPE	CATEGORY	DISTANCE	RACE START TIME	EXPECTED FINISH TIME	LOCATION
<b>Saturday 24 January Stage 1</b>	Individual Time Trial	PSL17s PSL Men and Women	5.5km	8:45am start 30 second intervals Start order issued after close of entries		Mount Barker Road freeway exit 'Devil's Elbow, City of Mitchem
<b>Sunday 25 January Stage 2</b>	Criterium	PSL17s Women	15 laps	3:20pm	4:00pm	Victoria Park Adelaide
		PSL17s Men	17 laps	4:20pm	5:00pm	
		PSL Women	30 laps	5:20pm	6:20pm	
		PSL Men	35 laps	6:40pm	7:40pm	
<b>Monday 26 January Stage 3</b>	Road Race	PSL Women	93.6 km	9:30am	12 noon	The Bend Motorsport Park Tallem Bend
		PSL Men	117 km	12:30pm	3:30pm	



# WATCH PSL LIVE!



**SBS Viceland and SBS On Demand will broadcast live from Victoria Park Sunday 25 January 5:30pm to 8:30pm AEDST**

**Comprehensive replays can also be found post event on SBS On Demand**






# ONE

THE ONE IS MORE THAN A BIKE. IT IS THE SUM OF EVERY LESSON WE'VE LEARNED, EVERY LIMIT WE'VE PUSHED, AND EVERY RISK WE'VE TAKEN TO MAKE SPEED TANGIBLE. YOU DON'T JUST RIDE THE ONE. YOU COMMIT TO IT. AND IN RETURN, IT COMMITS TO YOU, TO TAKE YOU FASTER THAN YOU THOUGHT POSSIBLE.

FACTOR

Never.<sup>™</sup>  
Status.  
Quo.





# SA KICK IT

## Tour Information

### CONTACT LIST

#### Race Officials

Race Director	Mike Crawley	Phone: 0424 325 534
Commissaire PCP	Greg Griffiths	
Commissaire	Tracy Johnson	
Commissaire	David Birks	
Commissaire	Emma Underwood	
Moto Comm	Tony Clarke	
Commissaire	Michael Keetman	

#### Event Team

PSL Director	Matt Wilson	Phone: 0424 325 534
Event Director	Mike Crawley	
Event Services	Maddy Crawley	
VIP Hospitality	Aaron Flanagan	
Media Manager	Amber Ford	
Driver Coordinator	Ray Thompson	
Event Crew	Nicola Farquhar	
	Kristina Katsanevas	
	Anthony Torr	
	Matt Carmen	
	Callum Winkworth	

#### Timing and Results

Timit Sports Timing	Ugo Durand
---------------------	------------

#### Broadcast

Editrix	Ian Gates
---------	-----------

#### Commentary

Venue	Angus Calder
Broadcast	Matilda Raynolds and Scott McGrory

#### Photography

Photographer	Beardy McBeard
--------------	----------------

#### Neutral Service

SRAM	Jarrold Runciman	Phone: 0419 306 178
------	------------------	---------------------

#### Event Medical

Lead	Nicola Medlycott	Phone: 0498 483 307
Onsite	Alex Scibberas	Phone: 0411 019 965
Ambulance SA		

# Echelon Club

## ***PREMIUM TRACKSIDE EXPERIENCE***

***The Echelon Club is a great opportunity for your Team to invite major stakeholders.***

This VIP experience will include networking opportunities with our PSL ambassadors, sponsors and special guests.

In the Echelon Club guests will enjoy access to a private cash bar for purchase with two hours of gourmet canapés and/or grazing platter service.

The enclosure comes furnished, with shaded areas for the summer weather.

Teams and Riders can purchase tickets to the Echelon Club for VIP/Sponsors for \$75 plus ticketing platform booking fees.

**Simply insert this code at checkout:**  
ECHELONCLUB\_VIP

More information can be found at:  
[www.provelosuperleague.com/membership/echelon-club](http://www.provelosuperleague.com/membership/echelon-club)

[www.provelosuperleague.com](http://www.provelosuperleague.com)



# SA KICK IT

## Tour Information

### Hospitals – 000 FOR ALL EMERGENCIES

#### McLaren Vale and Districts War Memorial Hospital

5-9 Aldersey Street  
McLaren Vale  
(08) 8323 6600

#### Tailem Bend District Hospital

74 Princes Hwy  
Tailem Bend  
(08) 8572 5800

#### Mount Barker District Soldiers' Memorial Hospital

87 Wellington Road  
Mount Barker SA 5251  
08 83931777

### Social Media

Facebook / Instagram / Tiktok  
X (Twitter)  
YouTube  
Hashtags

@ProVeloSuperLeague  
@ProVeloSL  
<https://www.youtube.com/@provelosuperleague>  
#PSL2026 #ProVeloSuperLeague  
#theworldiswatching #roadtotheworldtour

## MEETINGS

### Race Number Collection

Date Friday 23 January  
Time 3.00 - 5.30pm  
Location PULLMAN HOTEL - 16 Hindmarsh Square, Adelaide SA 5000  
Level 15 Executive Board Room

*\*\*Riders licenses will need to be presented when collecting race numbers*

### Team Managers and Individual Riders Meeting

Date Friday 23 January  
Time 6.00pm  
Online ***Click here to join***  
Teams Meeting ID: 455 678 370 876 49 Passcode: qX2ym3yb

### Commissaires and Officials Meeting

Date Friday 23 January  
Time 6.30pm  
Location PULLMAN HOTEL - 16 Hindmarsh Square, Adelaide SA 5000  
Level 15 Executive Board Room

### Extreme Weather Policy

ProVelo will refer to AusCycling Extreme weather policy should we experience extreme weather conditions.

<https://admin.platform.auscycling.org.au/uploads/extreme-weather-policy-v1-website.pdf>

### Rider Sign On

Riders will be required to sign on for each stage. A sign on board will be at the start finish line of Stage 2 and 3. Sign On will be open 45mins prior to race start and closed 10 mins prior to race start. Penalties will apply for riders not signing on in the required time period. No sign on required for the ITT, officials will manage ITT start.



Join our official  
WhatsApp group  
for general  
information  
updates.

# SA KICK IT

## Tour Information

### Presentations

Presentations will take place on the main stage after each stage.

All Jersey leaders and stage placings, 1, 2, 3 will be required to be present to the presentation stage directly after the stage finish.

After the final stage finish, stage winners, all jersey winners, 1st, 2nd and 3rd on GC and all League Jersey Leaders must present for presentations immediately after the stage finish.

It is critical to ensure all riders are at the stage area IMMEDIATELY after the stage finish to ensure the presentation will fit into our broadcast production window.

- **Stage 1 ITT**  
Eagle Mountain Bike Park Car Park, Mount Barker Road. Main Stage in parking area
- **Stage 2 Criterium**  
Victoria Park. Main Stage (Grass area centre of track adjacent to start/finish line)
- **Stage 3 Road Race**  
The Bend Motor Racing Circuit. Main Presentation Stage adjacent to start/finish line

## STAGE 1 Time Trial

<b>Date</b>	Saturday 24 January
<b>Time</b>	Women's 17s: 8.45am    Men's 17s: 9.00am Women: 9.30am    Men: 10.15am
<b>Start Location</b>	Mount Barker Road Freeway exit Devil's Elbow. (refer to start map below)
<b>Distance</b>	5.5kms
<b>Team/Rider Parking</b>	Eagle Mountain Bike Park Car Park, Mount Barker Road
<b>Stage 1 Points</b>	Stage 1 will also be classified as a Cat 1 Climb In addition to the riders' time to determine the winner, points will be awarded as follows to the Hill Climb Classification of the Tour 10, 8, 6, 4, 2

Riders will depart at 30 second intervals, please ensure you arrive at the start area at least 10 minutes prior to your start line. Individual wild card riders start first, then team riders in reverse order of team number and bib number, e.g. 127, 117, 107, ..., 21, 11, 1. Team managers please select the rider roles accordingly if you want your riders to start the Time Trial in a specific order.

There is no parking available at the start line, so all riders and staff must descend down from the team parking by bike or on foot. There is shade, seating and toilets available at the start marshalling area.

Riders will use Mount Barker Road as the time trial course with the final 1km (approx.) on the Crafers Bikeway right-hand outbound lane. All riders must stay in the left-hand lane of the road and not cross the centre line or merge into the bike lane at any time, until the final 1km where the course merges with Crafers Bikeway.

Returning riders will travel back along the bi-directional Crafers Bikeway to the Eagle Mountain Bike Park Car Park. Note the Bikeway will be open to the public. Event marshals and officials will be on course to ensure the safety of all road users. Presentations will take place at the Eagle Mountain Bike Park Car Park.

**All riders and staff please be aware** that the bike path is open to the general public and as such will have both ascending and descending riders on it for the duration of the event. Please take extreme caution when on this path

**\*\*No team follow cars permitted; SRAM will have neutral service placed on the climb to assist if required.**

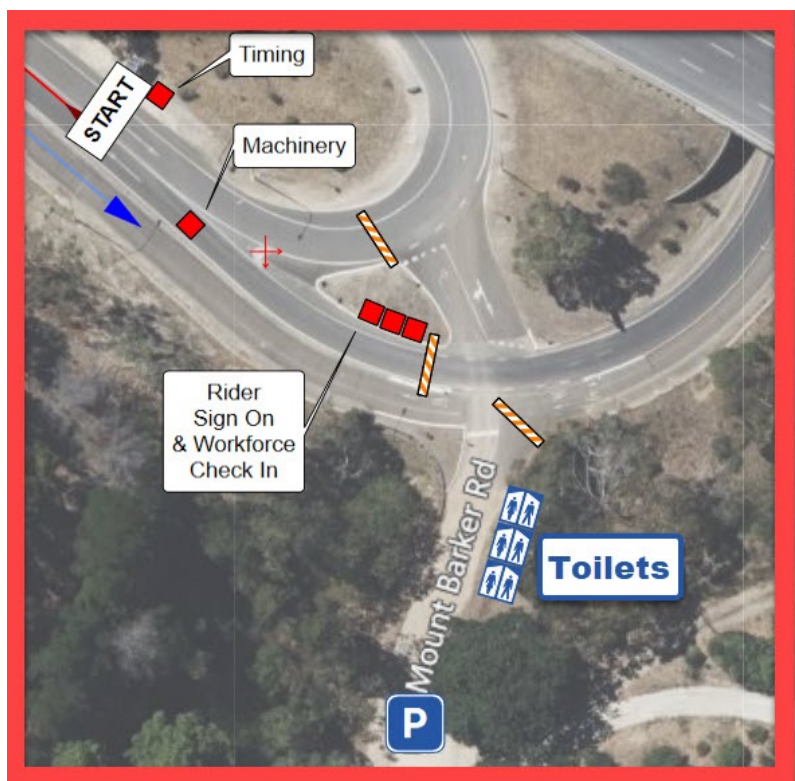


# SA KICK IT

## Tour Information

### ITT Start Location

#### Map 1. Start site map



#### Map 2. Course Details

5.5km ascent, with an elevation gain of 263m and a steady average gradient of 4.2%



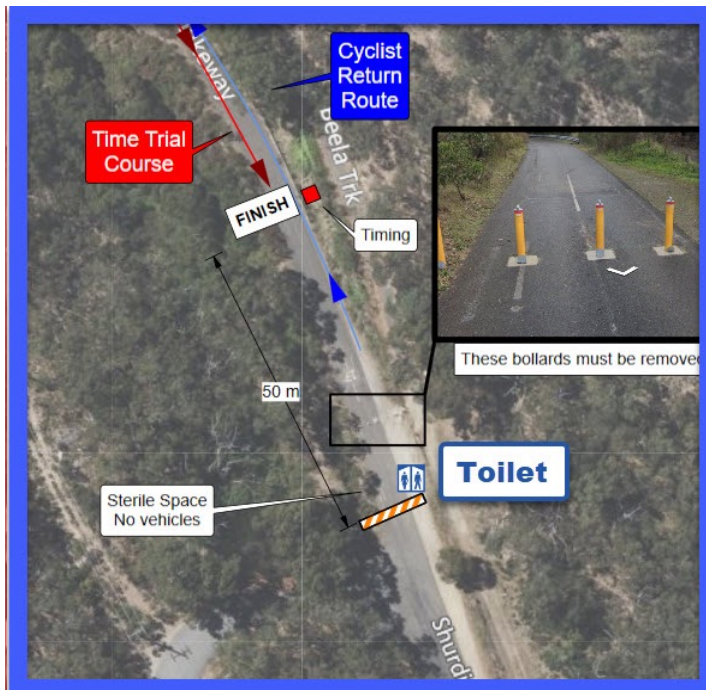
# SA KICK IT

## Tour Information

### Finish Line

The finish line is located at Crafers Bikeway and Radio Tower, Access Lane, Adelaide Hills Council (see map).

### Map 3. Finish line site map

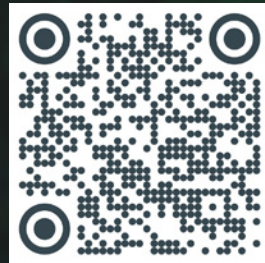


Podium and registrations will all take place at the team and rider parking area at the Eagle Mountain Bike Park Car Park, Mount Barker Road (see map below). Water and refreshments will be available at the finish.

### Map 4. Main Team and Rider Parking area and presentation area







# Why Detour?

## EXPERIENCE

18 years in business

## TRUST

Your kit done right - proven.

## INTEGRATION

We control the entire supply chain

## FLEXIBILITY

No minimums, comprehensive range

## DELIVERY

On time every time

## LOCAL SUPPORT

Australian company, Australian-based

[www.detourcustom.cc](http://www.detourcustom.cc)



# SA KICK IT

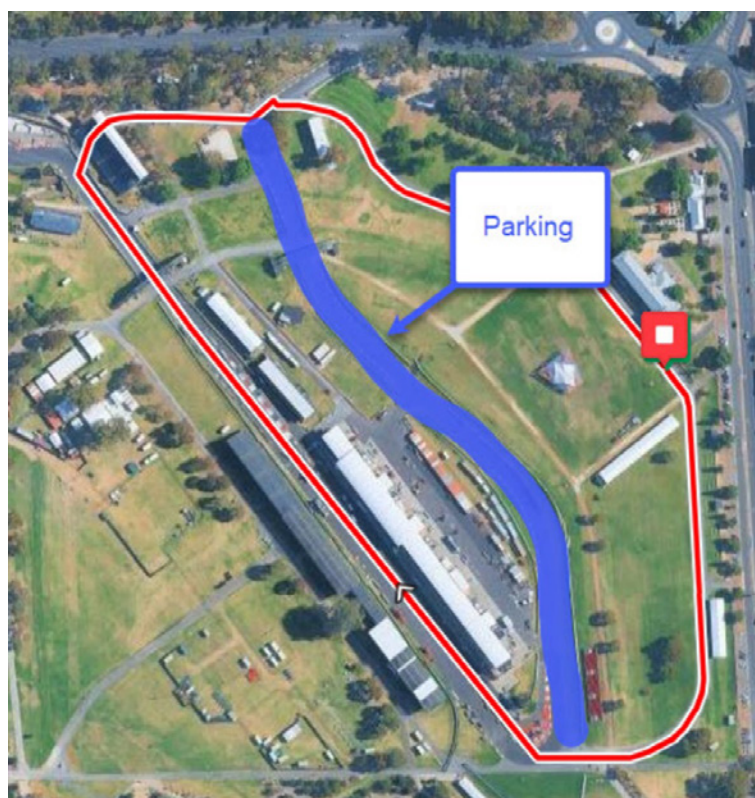
## Tour Information

### STAGE 2

### Criterium

<b>Date</b>	Sunday 25 January
<b>Time</b>	Women's 17s: 3.20pm - 4.00pm (15 laps) Men's 17s: 4:20pm - 5:00pm (17 laps) Women's: 5:20pm - 6:20pm (30 laps) Men's: 6:40pm - 7:40pm (35 laps)
<b>Rider Sign on</b>	Victoria Park Grandstand
<b>Start line</b>	In front of Victoria Park Grandstand
<b>Finish line</b>	In front of Victoria Park Grandstand
<b>Start Location</b>	Victoria Park, Wakefield Rd, Adelaide
<b>Lap Length</b>	1.3 km
<b>Team/Rider Parking</b>	Follow directional arrows to infield rider parking from Wakefield Rd.
<b>Stage 2 Points</b>	Intermediate Sprints will be on laps 10, 15, 20

#### Course Details - Victoria Park Criterium



[www.billigence.com](http://www.billigence.com)

HIGH QUALITY PERFORMANCE INSIGHTS.  
**BETTER RESULTS.**



**BILLIGENCE**

Data In.Sight



**BILLIGENCE HELPS TO LIFT SPORTS  
AND ENTERPRISE PERFORMANCE TO THE  
NEXT LEVEL USING AI & DATA ANALYTICS**



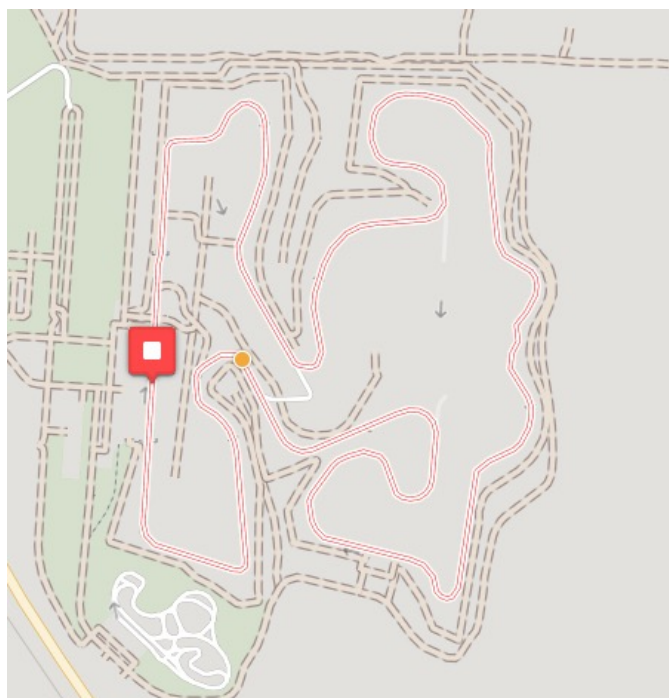
# SA KICK IT

## Tour Information

### STAGE 3

### Road Race

<b>Date</b>	Monday 26 January
<b>Time</b>	Women: 9:30am (12 laps, 93.6 km) Men: 12:30pm (15 laps, 117 km)
<b>Start Location</b>	The Bend Motorsport Park 43 Dukes Highway, Tailem Bend
<b>Lap Length:</b>	7.8 km
<b>Rider sign on:</b>	Pit Lane, The Bend Circuit
<b>Start/Finish line:</b>	Main overhead Gantry, The Bend Circuit
<b>Presentations:</b>	At Start/finish line
<b>Feedzone:</b>	Location is wind dependent. Exact location will be provided on the day of the stage
<b>Team/Rider Parking</b>	Teams and individual riders will be able to set up in the pit garages which will have direct access to pitlane and the track. Please ensure the pit garages are left clean before you leave. Access to pit garages will be from 8am
<b>Convoy Cars:</b>	Teams will be allowed to have convoy cars for this stage. Convoy car occupants must all hold an AusCycling license. Driver Briefing will be held at the presentation stage adjacent to the start line 15 minutes before each race. Radios and convoy numbers will also be issued at the briefing
<b>Stage 3 Points</b>	Intermediate Sprints will be contested at the finish line on laps 3, 6 and 9 for the women and 4, 8 and 12 for the men.  A Cat 4 hill climb will be contested at kilometre 6.4 on laps 1, 4 and 7 for the women and 2, 6 and 10 for the men. The top of the hill is marked by the orange dot on the below race map.



# SA KICK IT

## Tour Information

### Course Details





# Rules and regulations

## ARTICLE 1. ORGANISATION

SA Kick It is a stage race which is part of the ProVelo Super League Series.

The event is sanctioned by AusCycling and applies the AusCycling rules, as well as the ProVelo Super League Regulations, available online at <https://provelosuperleague.com/registration/rules-andregulations>

## ARTICLE 2. PARTICIPATION

The respective events are open to ProVelo Super League teams, Wildcard teams and Wildcard individual riders.

Teams may register a minimum of six (6) and maximum of eight (8) riders for the season.

A PSL Registered Team may register an additional two (2) junior U19 riders as part of their team roster as a 9th and 10th rider. Additional U19 riders will be counted against the maximum eight (8) rider registration.

## ARTICLE 3. RACE HEADQUARTERS

Team representatives and individual wildcard riders are requested to confirm their starters and collect their race numbers from the PULLMAN HOTEL - 16 Hindmarsh Square, Adelaide SA 5000 Level 15 Executive Board Room between 3 pm and 5.30 pm on Friday, 23 January. Team representatives and individual riders are requested to bring licenses of all riders taking part in the event for verification.

The technical meeting, organised in accordance with AusCycling regulations and adapted accordingly with the president of the commissaires' panel will take place online on Microsoft Teams at 6.00 pm on Friday, 23 January. The link to the online meeting will be listed in the Meetings section of this technical guide.

Attendance of number collection and the technical meeting by all team representatives and individual wildcard riders is compulsory.

## ARTICLE 4. NEUTRAL TECHNICAL SUPPORT

The technical support service is handled by SRAM

The neutral support during the road race is taken care of by means of:

- 1 automobile
- 1 motorcycle

Servicing will take place on the left side of the road.

## ARTICLE 5. BONUSES

Time Bonuses will be awarded at all stages except on the time trial on Stage 1.

Intermediate Sprints: 3", 2", 1"

Finishes: 10", 6", 4"

## ARTICLE 6. FINISHING TIME LIMITS

Taking into account the characteristics of each stage, the finishing time limits have been set as follows: 30% for the stage 1 time trial and the stage 3 road race. The time limit may, in exceptional circumstances only, be increased by the Commissaire's panel, in agreement with the organiser.

# Rules and regulations

## ARTICLE 7. CLASSIFICATIONS

The following classifications will be issued. All leaders are required to wear the appropriate jersey.

### Individual General Classification

The competitor with the lowest cumulative time over all stages is the race leader. Each rider's cumulative time includes any time penalties assessed by the Commissaire's Panel as well as time bonuses awarded in individual stages.

When two riders or more have the same cumulative time, ties are broken according to article 2.6.015 of the UCI regulations.

### Team General Classification

The team classification for the day shall be calculated on the basis of the sum of the three best individual times from each team.

The team general classification shall be calculated on the basis of the sum of the three best individual times from each team in each stage ridden.

When two teams or more have the same time in the team classification of a stage or in the team general classifications, the ties are broken in accordance with article 2.6.016 of the UCI Regulations UCI regulations.

### Young Rider Classifications

Two young rider classifications are issued:

- The Under 19 classification concerns riders born in 2008 and 2009
- The Under 23 classification concerns riders born in 2004, 2005, 2006 and 2007

The young rider classifications are based on the individual General Classification ranking.

### Under 17 Division (PSL17s)

The PSL17s will compete in the Mount Osmond ITT and the Victoria Park Criterium stages of SA Kick It.

The PSL17s competition will follow a stages and points system as outlined in the PSL17s Technical Regulations. All under 17s must compete in accordance with AusCycling rules and the ProVelo SUpEr League PSL17s Technical Regulations 2026 available online at:- <https://provelosuperleague.com/registration/rules-and-regulations>

### Mountain Classification

The Mountain classification is based on the total points awarded at the designated locations. Exact locations are indicated on the course maps and technical summary in the Technical Guide.

Points awarded are as follows:

Place	Category 1	Category 4
1	10	3
2	8	2
3	6	1
4	4	
5	2	

When two riders or more have the same number or points in the mountain classification, ties are broken in accordance with article 2.6.017 of the UCI regulations.



# Rules and regulations

## Points Classification

The points classification is awarded to the rider with the highest aggregate number of points, accumulated from intermediate sprints and stage finishes.

Exact locations of the intermediate sprints are indicated on the course maps and technical summary in the Technical Guide.

Points are awarded as follows for each of the intermediate sprints and stage finishes:

Place	Stage Finish	Intermediate Sprint
1	30	6
2	25	4
3	22	2
4	19	
5	17	
6	15	
7	13	
8	11	
9	9	
10	7	
11	5	
12	4	
13	3	
14	2	
15	1	

No points are allocated on the Stage 1 Time Trial.

When two riders or more have the same number of points in the points classification, ties are broken in accordance with article 2.6.017 of the UCI regulations.

## ARTICLE 8. STARTS

Competitors must sign the “sign-on board” sheet at the assembly point on each Race Day. Sign on is open for 1 hour and 10 minutes, closing 10 minutes before the race start.

In accordance with article 2.12.007 of the UCI regulations, riders not signing-on may be penalised, along with their team manager.

## ARTICLE 9. RACE INCIDENTS OCCURRING IN THE LAST 3KM

In the case of a duly noted incident in the last 3 km of the road race stage 3, the rider or riders affected shall be credited with the time of the rider or riders in whose company they were riding at the moment of the incident. Their placing shall be determined by the order in which they actually cross the finishing line. An incident is considered as any event independent from the physical capacity of the rider (fall, mechanical problem, puncture).

Riders affected by an incident are asked to make themselves known to a Commissaire by raising their hand and report to a Commissaire after the finish of the stage. If the result of a duly noted fall in the last 3km, a rider cannot cross the finishing line, they shall be placed last in the stage and credited with the time of the rider or riders in whose company they were riding at the time of the incident. The 3km rule will only be enforced on stage 3. Decisions related to this article are taken independently by the Commissaire’s Panel.

# Rules and regulations

## ARTICLE 10. CRITERIUM STAGES

- All competitors must complete the criterium stages
- Lapped rider must be withdrawn officially by race officials for the above standard to be implemented and an officially withdrawn rider is considered to have completed the stage and is permitted to continue in next stage.
- Rider withdrawing from race under their own volition will be considered as retiring and will be classified as a stage DNF and is not permitted to continue in the next stage.

## Criterium Configuration

- All criteriums must be run to set number of total laps

## Pulled Riders

In the case that a rider is pulled from the event they will be given the final time of the final finisher plus calculated additional time. Number of Laps Not Completed	% of winners average lap time
1	100%
2	110%
3	120%
4	130%
5	140%
6	150%
7	160%
8	170%
9	180%
10	190%
11+	200%
Genuine effort 50% or less of race	250%

## ARTICLE 11. RESULTS

Results will be released after confirmation from the Commissaire's Panel. Official Results will be posted on the race's official website.

## ARTICLE 12. LOCAL LAWS

It is against the law to urinate in public in South Australia and by doing so you may be cited by local law enforcement. Please obey all littering, traffic laws, speed limits and the directions of law enforcement. The Commissaires may enforce these rules concerning rider and team manager conduct, even if there is no citation by local law enforcement.

## ARTICLE 13. RIDER IDENTIFICATION

During SA Kick It, all competitors must use the frame number plate and body numbers as supplied by the organisation and not altered in any way.



# VENEZIANO

Coffee Roasters



## 20% OFF COFFEE

Use code **PROVELO26** at check out.  
20% off blends, singles, cans, instant, drip  
bags, pods and merch until 31.12.26

Shop online at [venezianocoffee.com.au](http://venezianocoffee.com.au)

## VENEZIANO



WHERE THE RIDE BEGINS